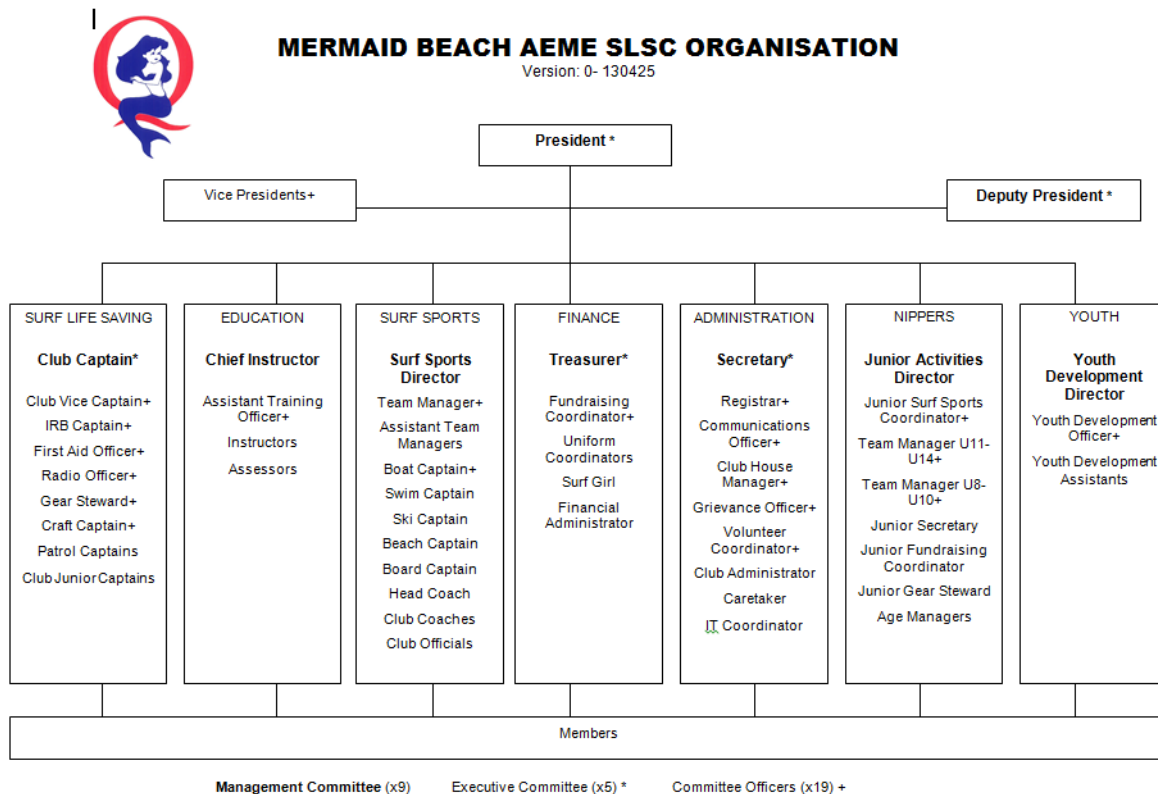


# WHAT HAPPENS AFTER NIPPERS?



MERMAID BEACH AEME SLSC ORGANISATION- 130425.doc

## Mermaid Beach AEME SLSC - Youth and Member Development

Youth and Member Development provides pathways for young members to become senior active lifesavers by developing teamwork, leadership, fitness and lifesaving skills.

It aims to strengthen the skills and experiences of our members through a variety of internal and external programs, events and initiatives.

Young people are the future of lifesaving and Mermaid Beach AEME SLSC in conjunction with SLSQ aim to provide our younger members with the opportunity to make friends and learn new skills in an enjoyable environment.

Youth and Member Development aims to:

- Promote maximum involvement in club surf sports, development and surf lifesaving activities and programs
- Conduct high quality and challenging development and lifesaving activities in compliance with club and SLSQ policies and procedures
- Coordinate and promote maximum attendance at branch, state and national development and leadership programs

There are many ways that you can be involved in lifesaving and there are a number of programs and activities that SLSQ and Mermaid Beach AEME SLSC run to help keep you motivated, keep you involved, and that help you get ahead in life outside lifesaving!

We also run social activities and programs that help you get fitter and stronger in the water and on the sand, and also teach vital leadership and teamwork skills.

We provide opportunities for all members to choose how they can be involved and feel valued for their contribution to surf lifesaving. Our members are our number one priority and their continual development is a catalyst for their growth physically, emotionally and psychologically.

# WHAT HAPPENS AFTER NIPPERS?

## YOUTH AND MEMBER ACTIVITIES:

<b><u>LEADERSHIP PROGRAMS:</u></b> <ul style="list-style-type: none"><li>• SLSA Leadership College</li><li>• SLSA Leaders Masterclass</li><li>• SLSQ Leadership Excellence Program</li><li>• SLSQ Breaka Youth Excellence Program</li></ul>	<b><u>CAMPS:</u></b> <ul style="list-style-type: none"><li>• Mermaid Beach AEME SLSC Development Camp</li><li>• Gold Coast Youth Development Camp</li><li>• SCB Branch – Gold Coast Youth Development Camp</li></ul>
<b><u>BRANCH ACTIVITIES:</u></b> <ul style="list-style-type: none"><li>• YIPS – Youth Involvement Program</li><li>• Youth Development Gala Dinner</li><li>• Amazing Race</li><li>• Beach Sports Challenge</li><li>• Movie World Fright Night</li><li>• School Holiday Programs</li></ul>	<b><u>COACHING AND TRAINING:</u></b> <ul style="list-style-type: none"><li>• Fitness classes</li><li>• Gym programs</li><li>• Board and Ski training</li><li>• Beach sprints and Flags</li></ul>

## MERMAID CLUB DEVELOPMENT CAMP

The camp is for our members from Under 11's through to seniors and parents. This is a whole club activity which is aimed at having lots of fun and helping to develop decision making capabilities, motor skills, teamwork, individual skills, morale and unity of our members. Hence, helping us to continue to build a happy and healthy environment for all members as our club continues to grow.

Details for 2017 Camp to be confirmed.

## SLSQ BREAKA YOUTH EXCELLENCE PROGRAM

The program aims to allow participants to meet new people, take calculated risks, self-challenge, learn leadership skills and have their voices heard.

### **WHAT IS THE YOUTH EXCELLENCE PROGRAM ALL ABOUT?**

The Breaka Youth Excellence Program (YEP) is conducted annually by SLSQ, allowing participants to experience the practical elements of leadership, team building, self-confidence, mentoring, communication, negotiation and problem solving, whilst having fun in non-surf club environment. About 80 members from across Queensland attend the camp each year.

### **WHO CAN APPLY?**

Active Members aged 15-17 years who have been identified by their clubs as a future leader, or who have a keen interest in developing their leadership and life skills. All applicants should –

- Hold a proficient Surf Rescue Certificate or Bronze Medallion
- Be financial club member currently in, or aspiring to, a leadership role

# WHAT HAPPENS AFTER NIPPERS?

## YIPS – YOUTH INVOLVEMENT PROGRAM

THE STRUCTURE OF THE PROGRAM NOT ONLY REWARDS AND RECOGNISES YOUTH PARTICIPANTS FOR THEIR COMMITMENT BUT ALSO SETS ACHIEVABLE GOALS TO ENCOURAGE ON-GOING PARTICIPATION ACROSS A RANGE OF LIFESAVING ACTIVITIES WHILE PROMOTING LEADERSHIP SKILLS, PERSONAL DEVELOPMENT AND SOCIAL INTERACTION WITH PEERS. YIPS ALSO ENCOURAGES A SENSE OF ORGANISATIONAL COMMITMENT AND PRIDE AND ASSISTS CLUBS WITH THE PROCESS OF SUCCESSION PLANNING THROUGH THE IDENTIFICATION OF FUTURE LEADERS.

### HOW DOES YIPS WORK?

The concept is simple! YIPs is a recognition and reward program that is self-paced and can be completed in three years, give or take depending on the member. The rewards program operates utilising a similar concept to that of frequent flyer points where participants collect points for being involved in a range of lifesaving activities. The more activities they engage in and the more hours they volunteer, the greater the points collected.

YIPs is designed to encourage youth participation in all areas of club activity including:

Lifesaving

Development

Competition

Administration

Junior Activities (nippers)

Youth Activities

Club Activities

Community Project (gold level only)

Participants can choose their level of involvement and the areas that they are specifically interested in. By collecting points, three levels of achievement can be attained which include:

Bronze – Minimum 150 points completed in three YIPs areas and 25 hours patrol

Silver – Minimum 400 points completed in four YIPs areas and 65 hours patrol

Gold – Minimum 800 points completed in five YIPs areas and 115 hours patrol and a community project of significance.

## HOW DO I GET INVOLVED AT MERMAID?

To get involved please contact one of our Youth Development representatives below at [youth@mermaidslsc.org.au](mailto:youth@mermaidslsc.org.au)

## WHO DO I TALK TO?

Your Youth Development committee members are:

**Youth Development Director:** Melinda Gerry

**Youth Officer:** Monica Wilkie

**Youth Development Committee:** Sophie Gerry, Ben Gerry, Amanda Montenegro

We are always looking for new members to join our committee and help us organise fun social activities for all club members. Please contact Mel Gerry if you want to be part of this fun team!!

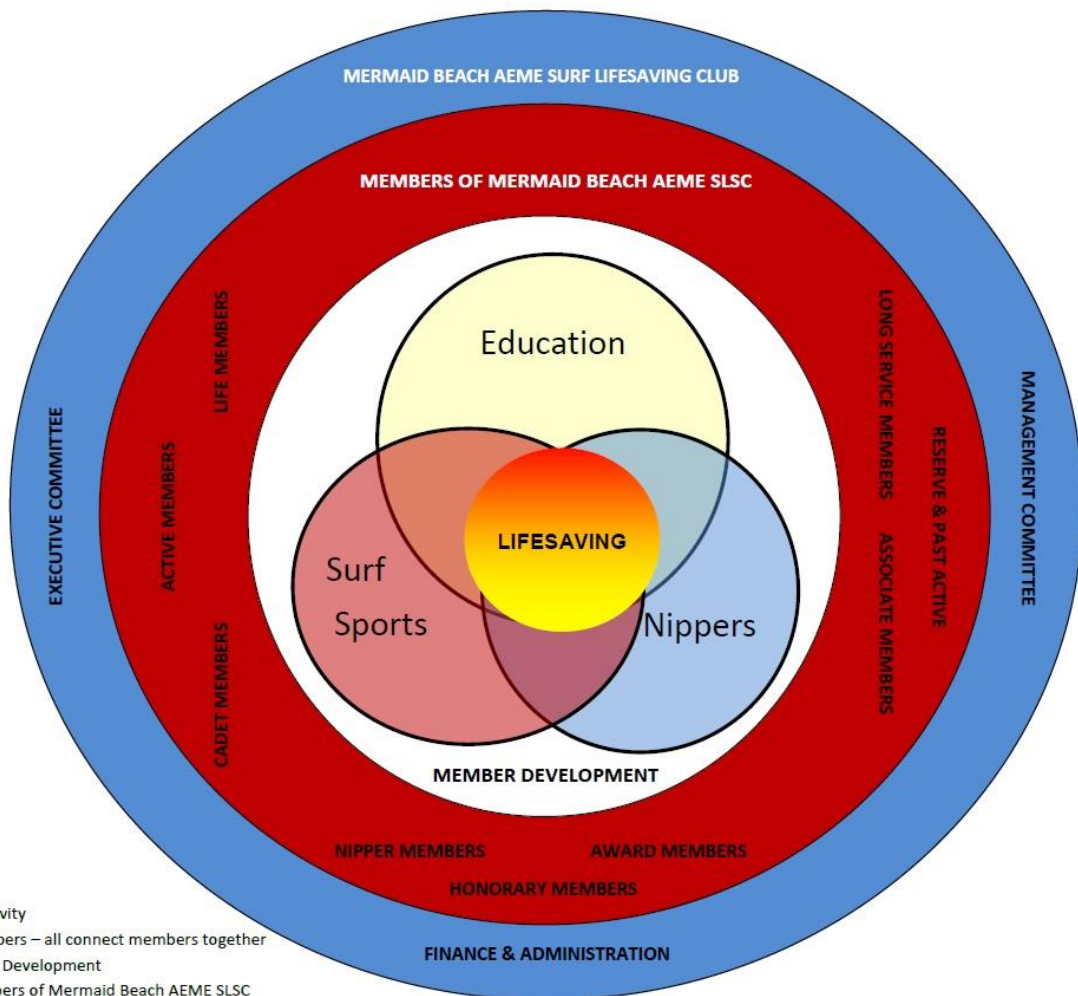
# WHAT HAPPENS AFTER NIPPERS?

## HOW WE ALL CONNECT

We are all volunteers and as the saying goes ‘many hands make light work’.

Some areas you and your parents can assist:

Water Safety at Nippers	Water Safety at Carnivals	Water Safety for courses
Water Safety at training	Officials at Carnivals	Junior Age Manager
Team Manager Assistant	Chaperones for events	Fundraising
Assistant roles for management	Assist with administration	Assist at Nippers
Help on BBQ at Nippers	Help on BBQ at Carnivals	Assist with hosted Carnivals



Lifesaving – is the Core Activity

Education, Surf Sports, Nippers – all connect members together

Inner White – Membership Development

Inner Layer Red – All Members of Mermaid Beach AEME SLSC

Out layer Blue – Mermaid Beach AEME SLSC